



Engaging Inuit on Reducing Underwater Radiated Noise in the Arctic

Lisa Qiluqqi Koperqualuk

Inuit Circumpolar Council

23 January 2025



RUSSIA

**Svalbard
(NORWAY)**

NORWAY

North Pole+

ARCTIC OCEAN

Bering Sea

*Ellesmere
Island*

ICELAND

**Alaska
(U.S.)**

**Greenland
(DENMARK)**

*Banks
Island*

**ATLANTIC
OCEAN**

**PACIFIC
OCEAN**

*Baffin
Bay*

*Victoria
Island*

*Baffin
Island*



CANADA

*Hudson
Bay*

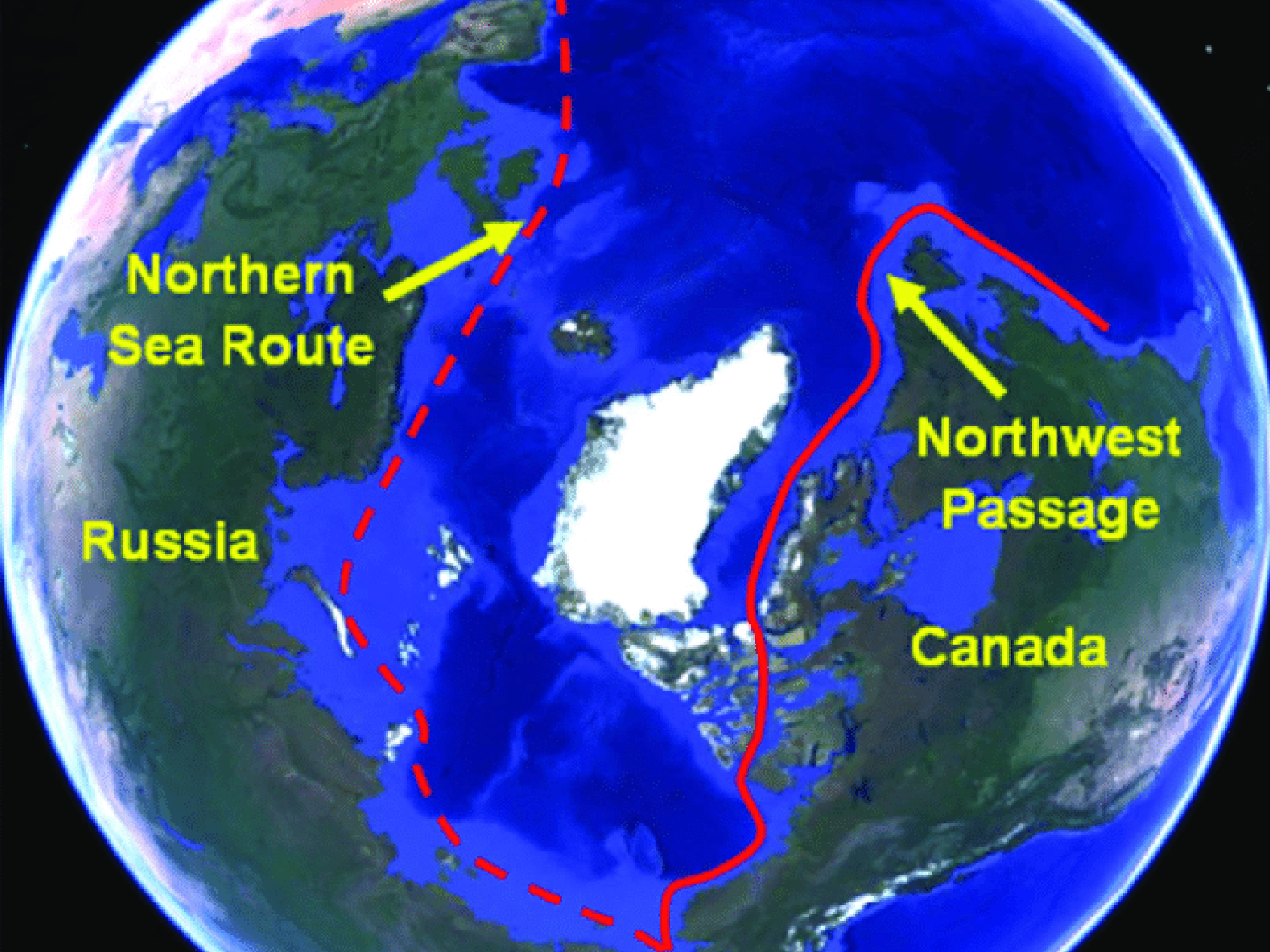
Labrador

0 500 1,000 mi

0 500 1,000 km

© Encyclopædia Britannica, Inc.

← Northwest Passage



**Northern
Sea Route**

Russia

**Northwest
Passage**

Canada





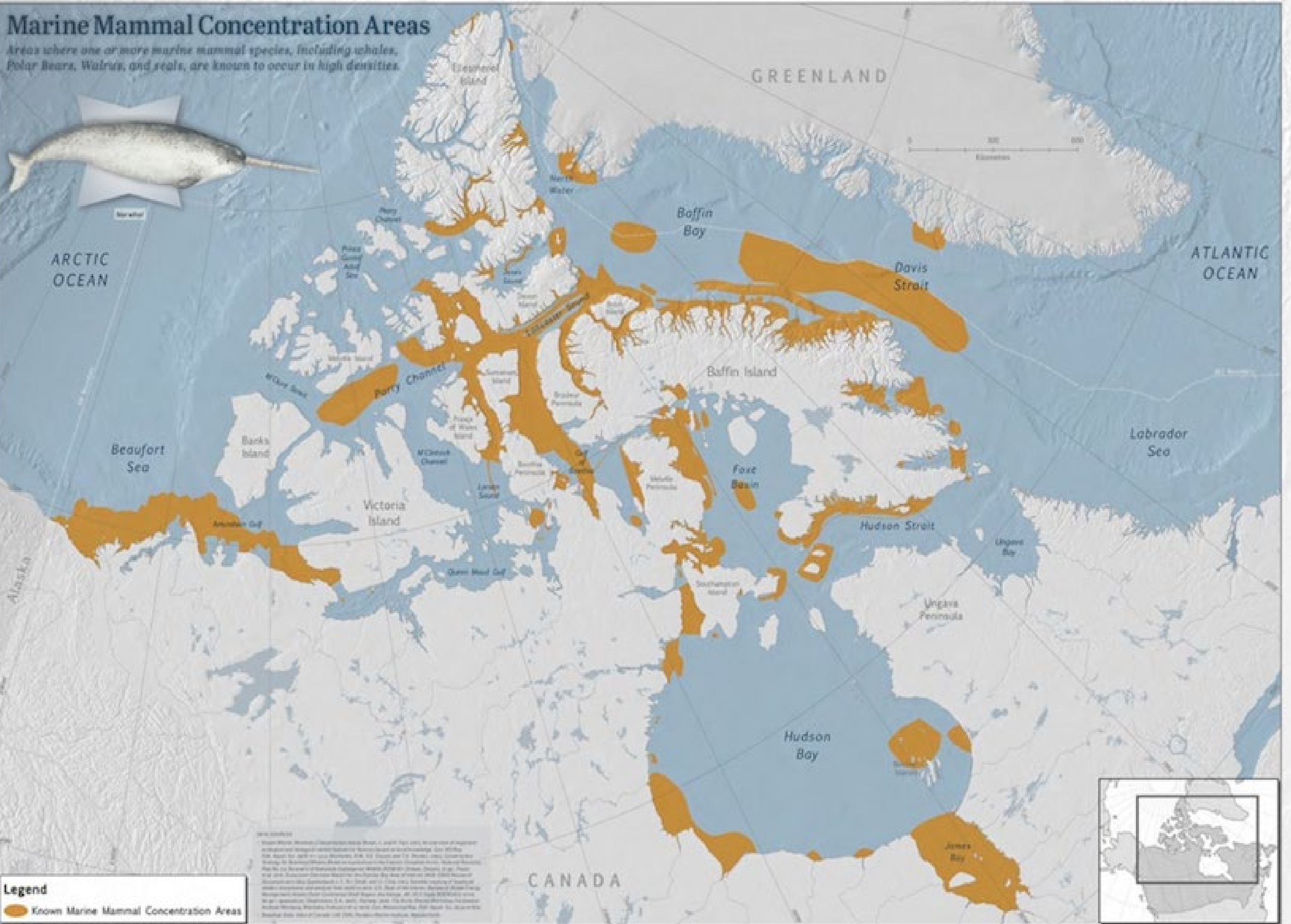


Marine Mammal Concentration Areas

Areas where one or more marine mammal species, including whales, Polar Bears, Walrus, and seals, are known to occur in high densities.



Narwhal



Legend

Known Marine Mammal Concentration Areas

Map of the Arctic region showing marine mammal concentration areas in orange. The map covers Greenland, Canada, and parts of Alaska and the Arctic Ocean. Key geographical features labeled include Baffin Bay, Davis Strait, Beaufort Sea, Hudson Strait, and Hudson Bay. Numerous islands and peninsulas are also labeled, such as Baffin Island, Victoria Island, and the Ungava Peninsula. A scale bar in kilometers (0, 200, 400) is located in the upper right. An inset map in the bottom right corner shows the location of the Arctic region within the context of the Northern Hemisphere.





Photo courtesy of Nunavut Marine Council

Qujannamiik - Nakurmiik - Ma'na - Quanaqquitit



www.inuitcircumpolar.com