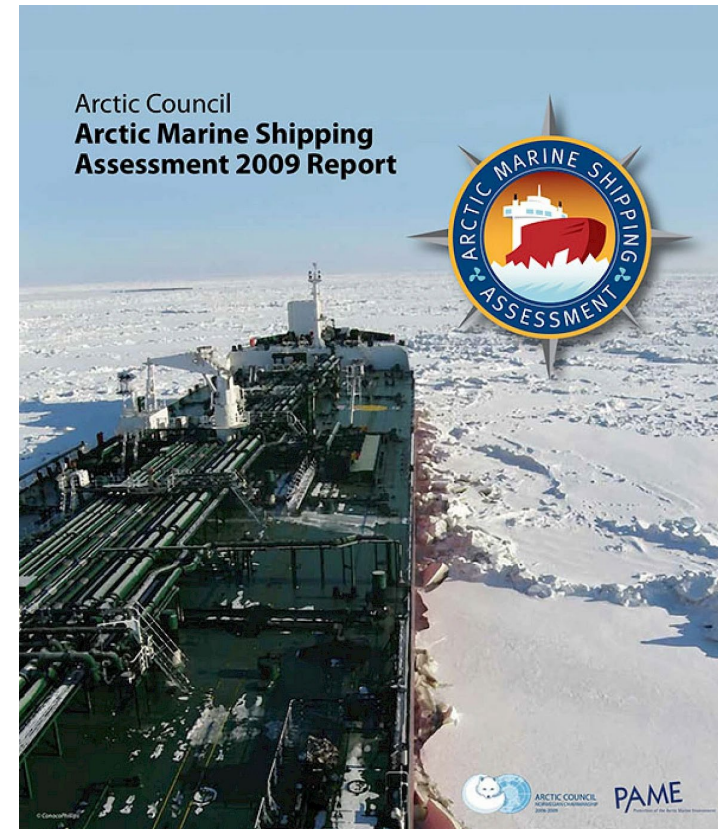


# Potential Places of Refuge for Vessels in Need of Assistance in the Arctic: An Inventory



# Project Basis

- Arctic Marine Shipping Assessment Report (2009)
  - “That the Arctic States recognize that improvements in Arctic marine infrastructure are needed to enhance safety and environmental protection in support of sustainable development. Examples of infrastructure where critical improvements are needed include:...**places of refuge....**”



# Objective & Key Definitions



**OBJECTIVE:** Create a single pan-Arctic inventory of all officially designated, pre-identified potential places of refuge for ships in need of assistance in the Arctic.

## KEY DEFINITIONS\*

- Ship in need of assistance - a ship in a situation, apart from one requiring rescue of persons on board, that could give rise to loss of the ship or to an environmental or navigational hazard.
- Place of refuge - a place where a ship in need of assistance can take action to enable it to stabilize its condition and reduce the risks to navigation, and to protect human life and the environment.

\* IMO Resolution A.1184(33) (2023), *Guidelines on Places of Refuge for Ships in Need of Assistance*.

# Project Timeline & Major Milestones

- Develop and circulate to Arctic States a questionnaire requesting relevant information.
  - **Target: January 2025**
- Based on the answers, prepare a draft inventory for Arctic State review and approval.
  - **Target: June 2025**
- Once approved, make the final inventory publicly available as an aid to mariners, regulators, marine insurers, and other Arctic maritime stakeholders
  - **Target: October/November 2025**
- If appropriate, consider submitting the final inventory as an information paper to IMO.
  - **Target: 2026**

PAME SHIPPING PROJECTS CO-LEADS

# Project Co-lead Contacts

- Peter Oppenheimer (USA)
  - [Peter.Oppenheimer@noaa.gov](mailto:Peter.Oppenheimer@noaa.gov)
- Loukas Kontogiannis (IMO)
  - [lkontogi@imo.org](mailto:lkontogi@imo.org)