

# Challenges in Polar casualty response

- The tale of the “Northguider”

Andreas Brachel



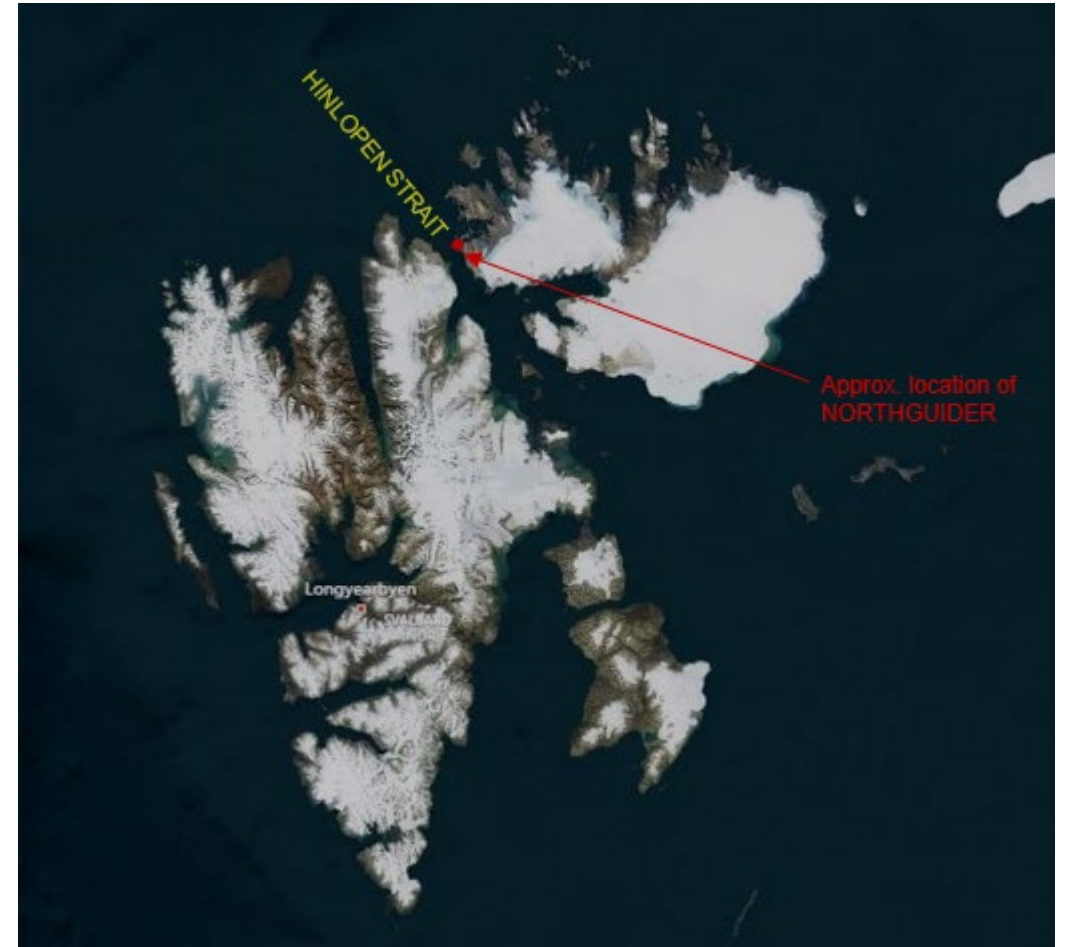
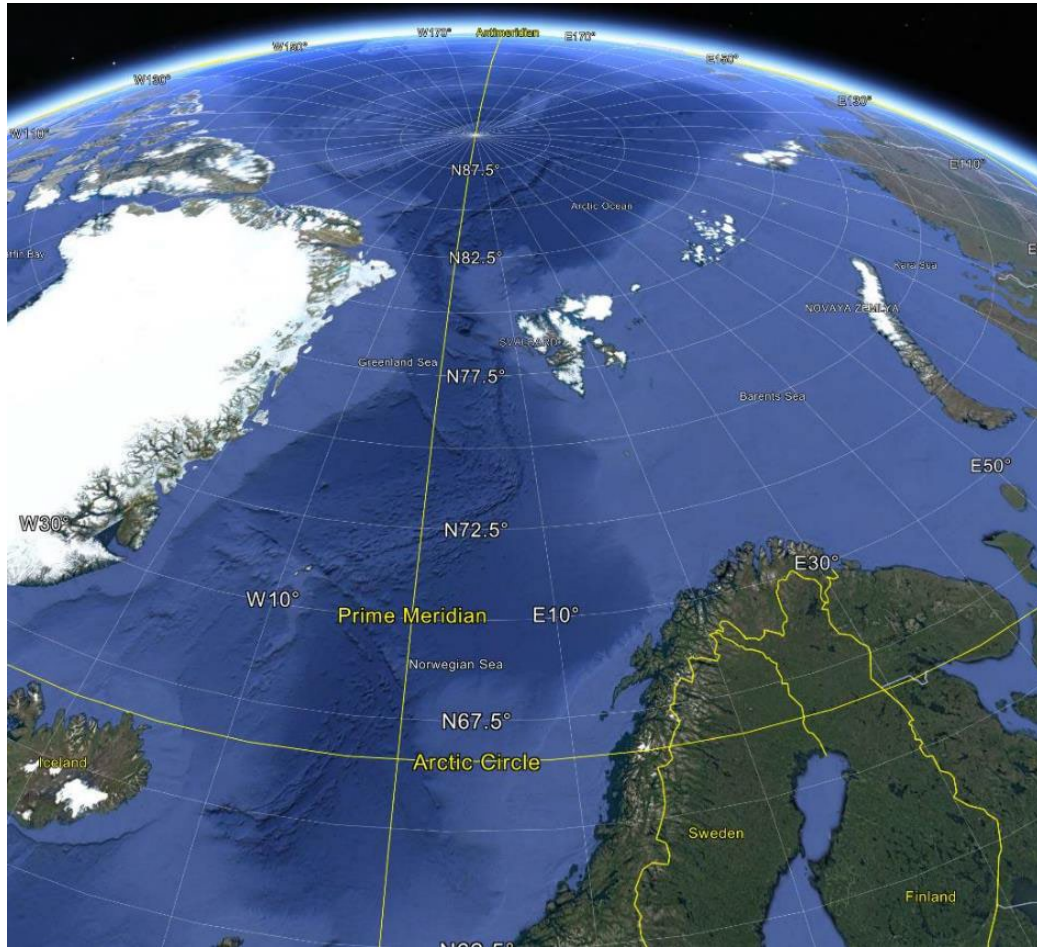
# 28<sup>th</sup> December, 2018



- Ran aground while trawling in Hinlopen Strait
  - 79 53,9 N – 018 04,7 E
- Approximately 332 m<sup>3</sup> of fuel (diesel oil)
- Engine room flooded and vessel blacked-out
- List angle: 17 degrees
- No daylight
- Air temp. approximately - 30 degrees Celsius



# On the top of the world



# Emergency response

“At the very edge of possible”





# Search And Rescue

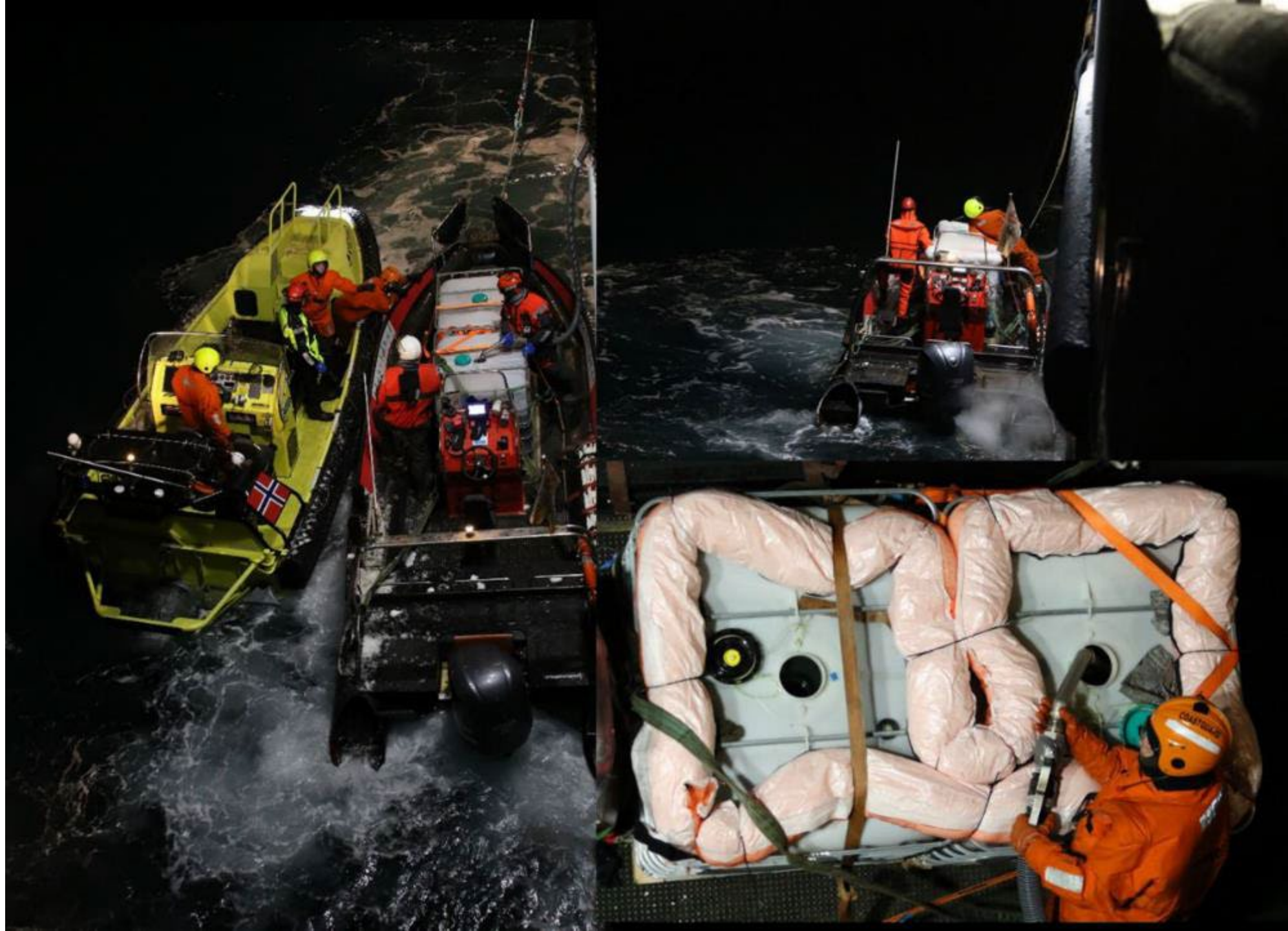
Crew of 14 airlifted 105 nm away from Longyearbyen



# Caretaking



# Bunker Removal





# Caretaking operations



**Movement sensors installed**



**Removal of goods and hazardous waste**



# Planning for removal

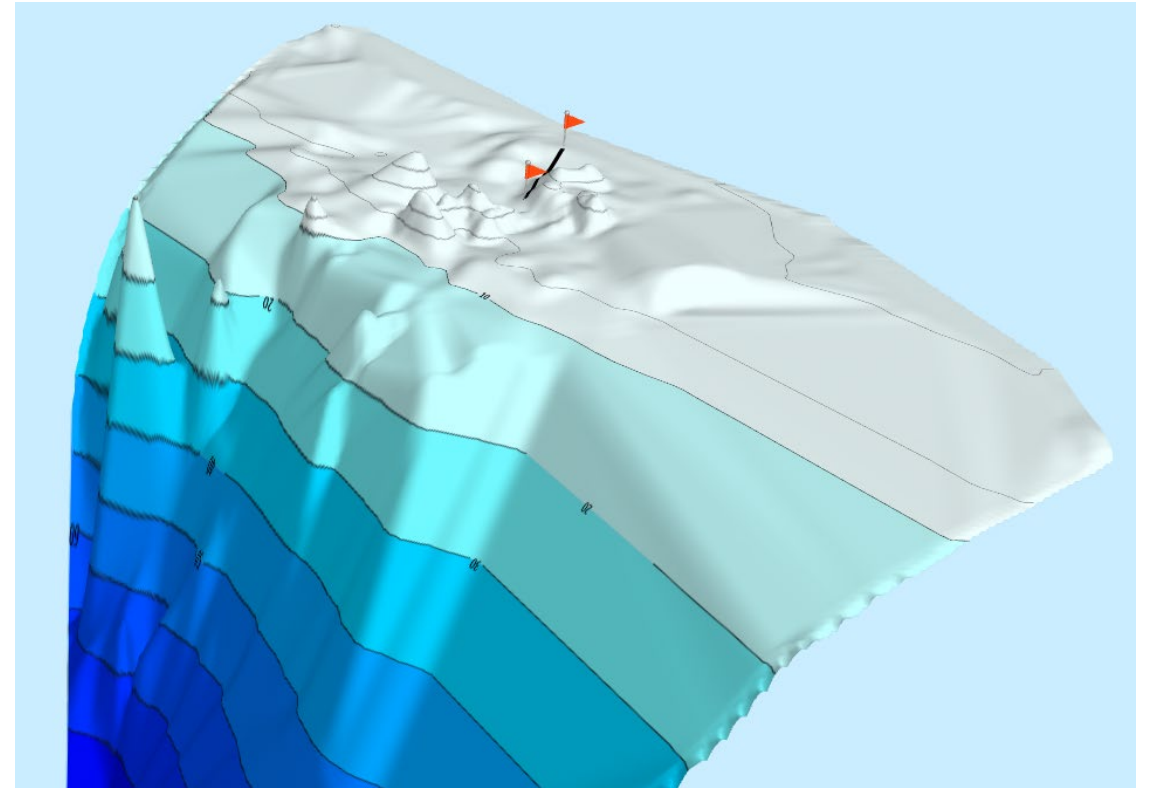
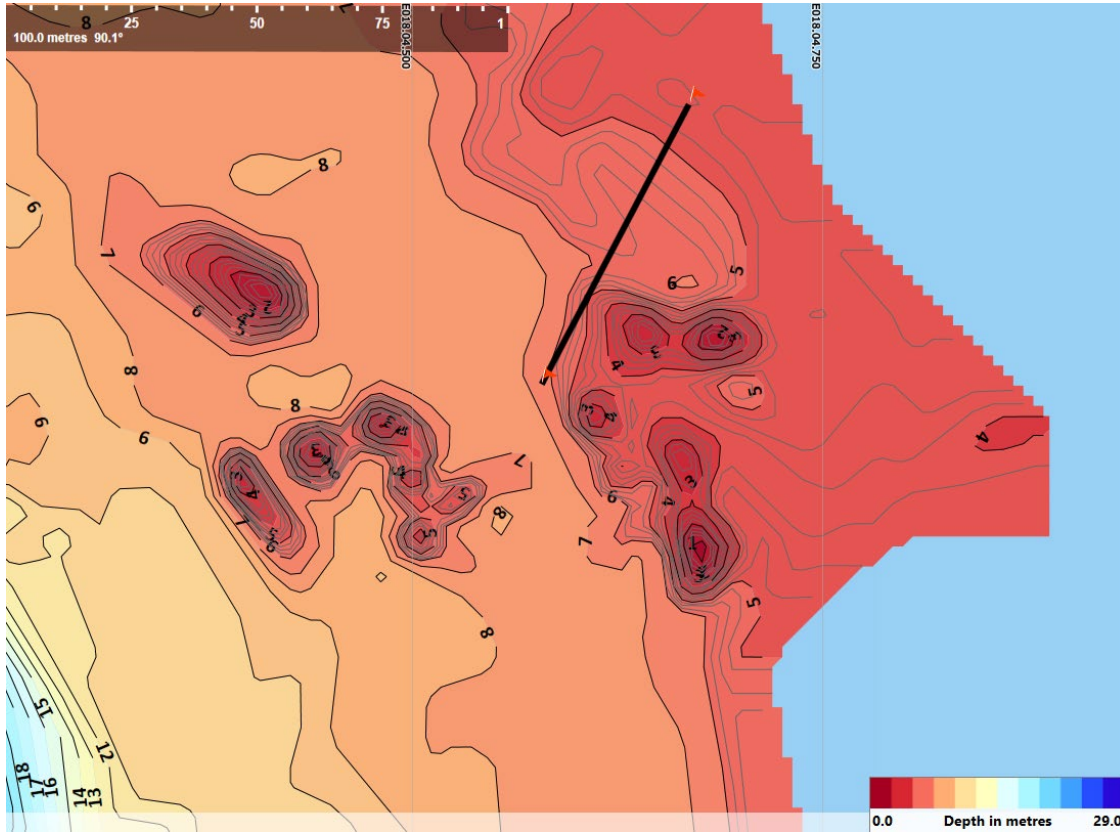


# Joint survey – Pre Qual ITT



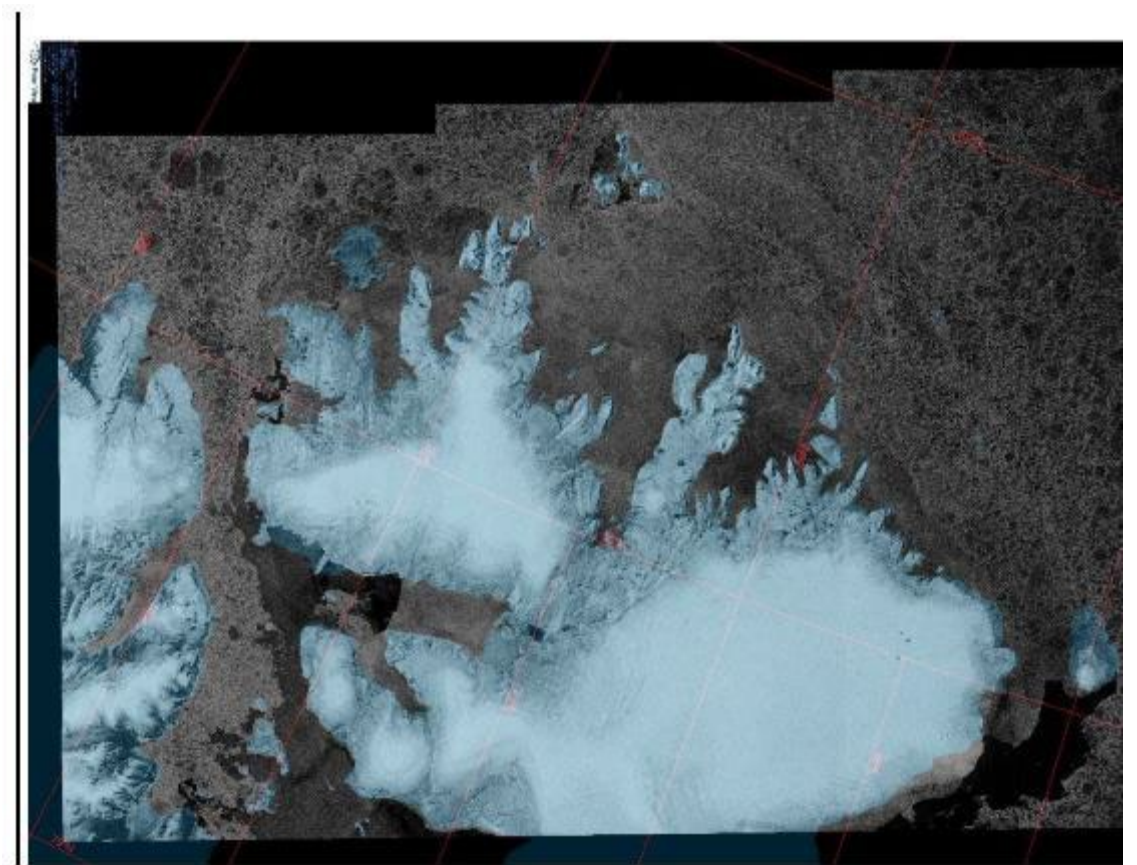
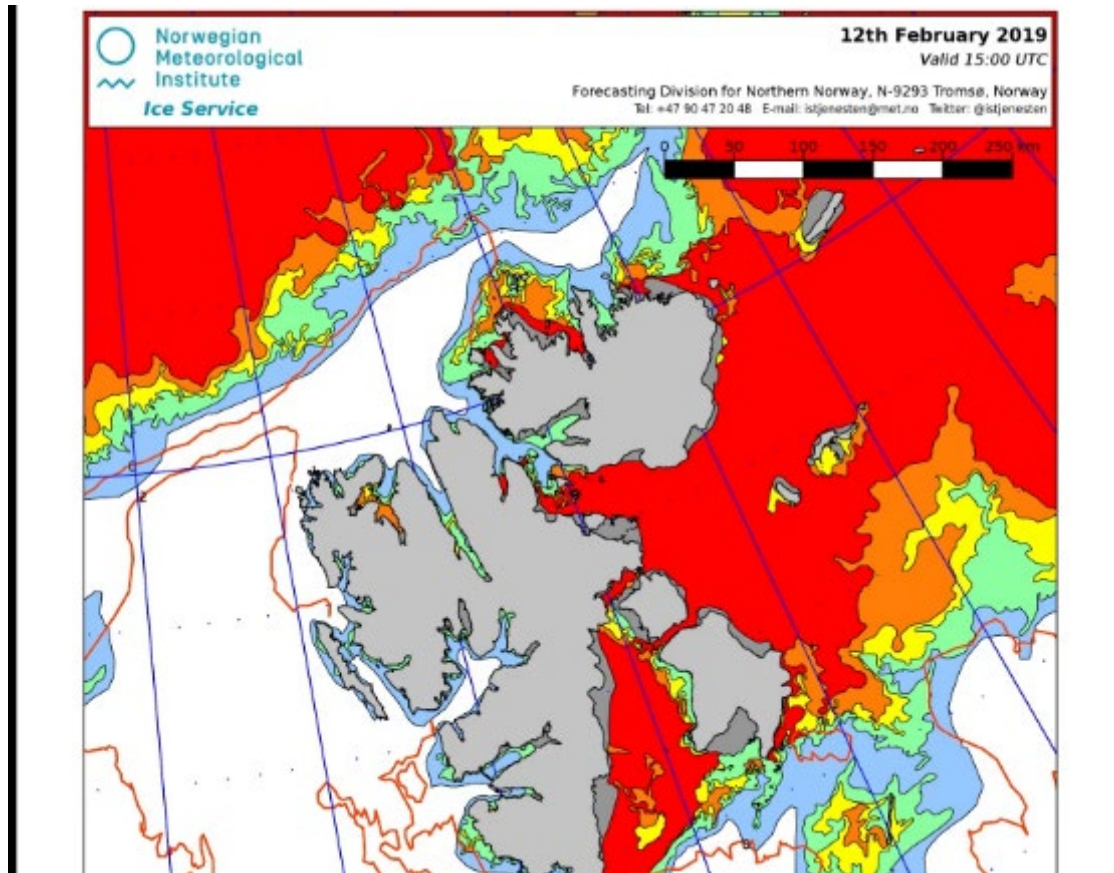


# Hard aground in shallow water





# Planning for ice



# Wreck Removal



# Flexible methodology





# 2020 Season

Cut and lift



# Ice Management



# Challenges





# Weather



# Distance



# Ice action





# Wildlife



# Learning points include...

## CHALLENGES AND RISKS



Ice



Low temperatures



Vessel Design



Lack of experience



Topside icing



Personnel Safety



Lack of emergency equipment



Severe Weather



Medi-vac



Extended night / day



Environment



Climate change



High Latitude



Wildlife



Passengers



Remoteness



Supply Lines



Redundancy

Thank you



# The Northguider

- Shrimp trawler
- Built in 1988 with a major refit in 2017
- Strengthened for operation in Arctic Waters
- General particulars:
  - LOA: 55.2 meters
  - Beam: 13.0 meters
  - Depth: 8.2 meters
  - Lightship: 1,995 Metric tons

