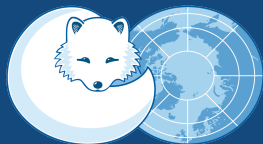




FISHING VESSELS IN THE ARCTIC POLAR CODE AREA

***Statistics from the Arctic Council's Protection of the Arctic Marine
Environment Working Group (PAME)***

***Torremolinos Ministerial Conference on Fishing Vessel Safety and Illegal, Unreported and
Unregulated (IUU) Fishing (21-23 October 2019)***



ARCTIC COUNCIL

Hjalti Hreinsson

PAME Project Manager



This document is a part of a presentation made by Hjalti Hreinsson from the PAME Secretariat at the *Torremolinos Ministerial Conference on Fishing Vessel Safety and Illegal, Unreported and Unregulated (IUU) Fishing (21-23 October 2019)*. For the Polar Panel on the conference, the request was to discuss fishing vessels in the Arctic. This document contains information from the ASTD System.



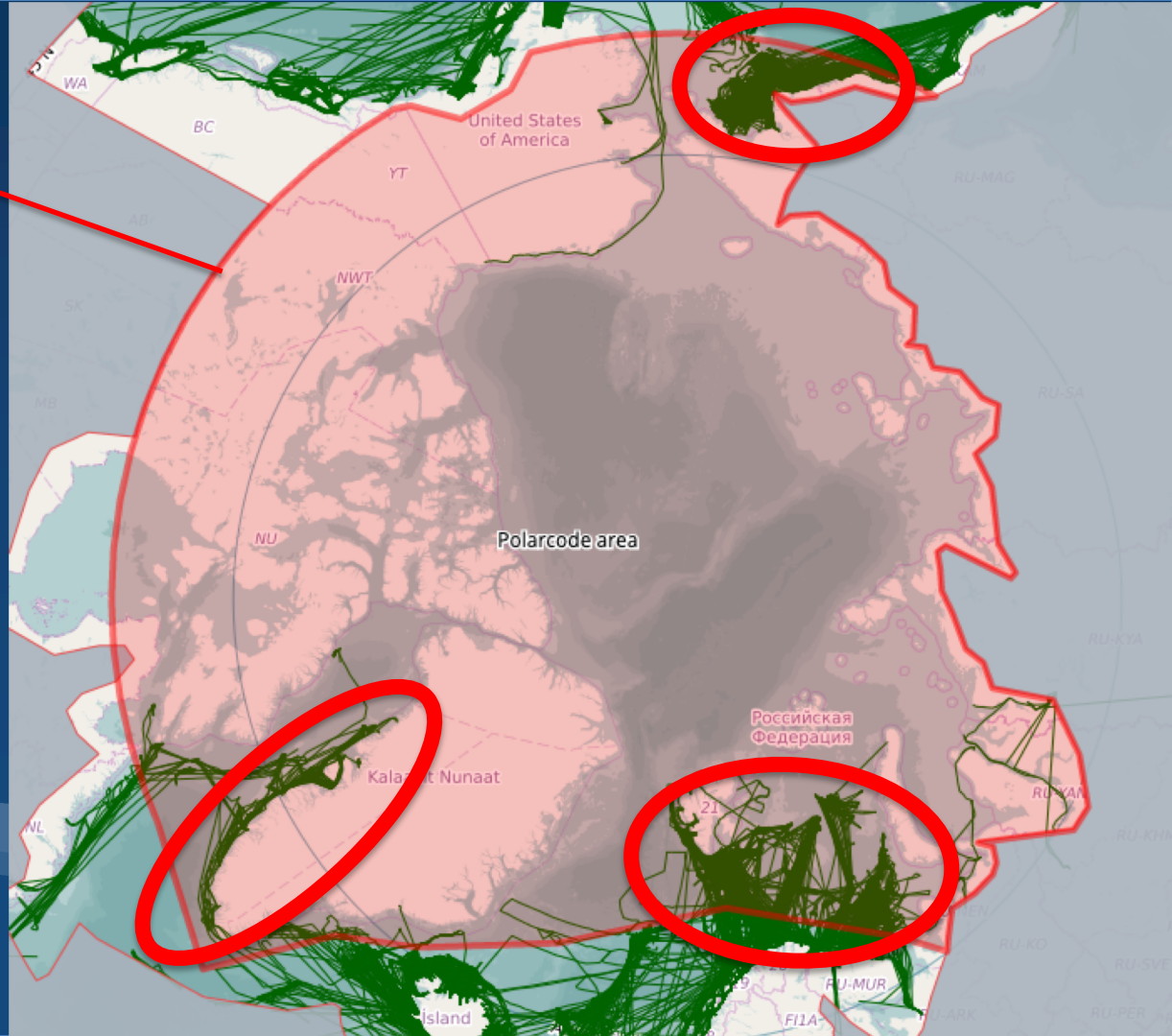
FISHING VESSELS IN THE ARCTIC - ANALYSIS

IMO Arctic Polar Code Area



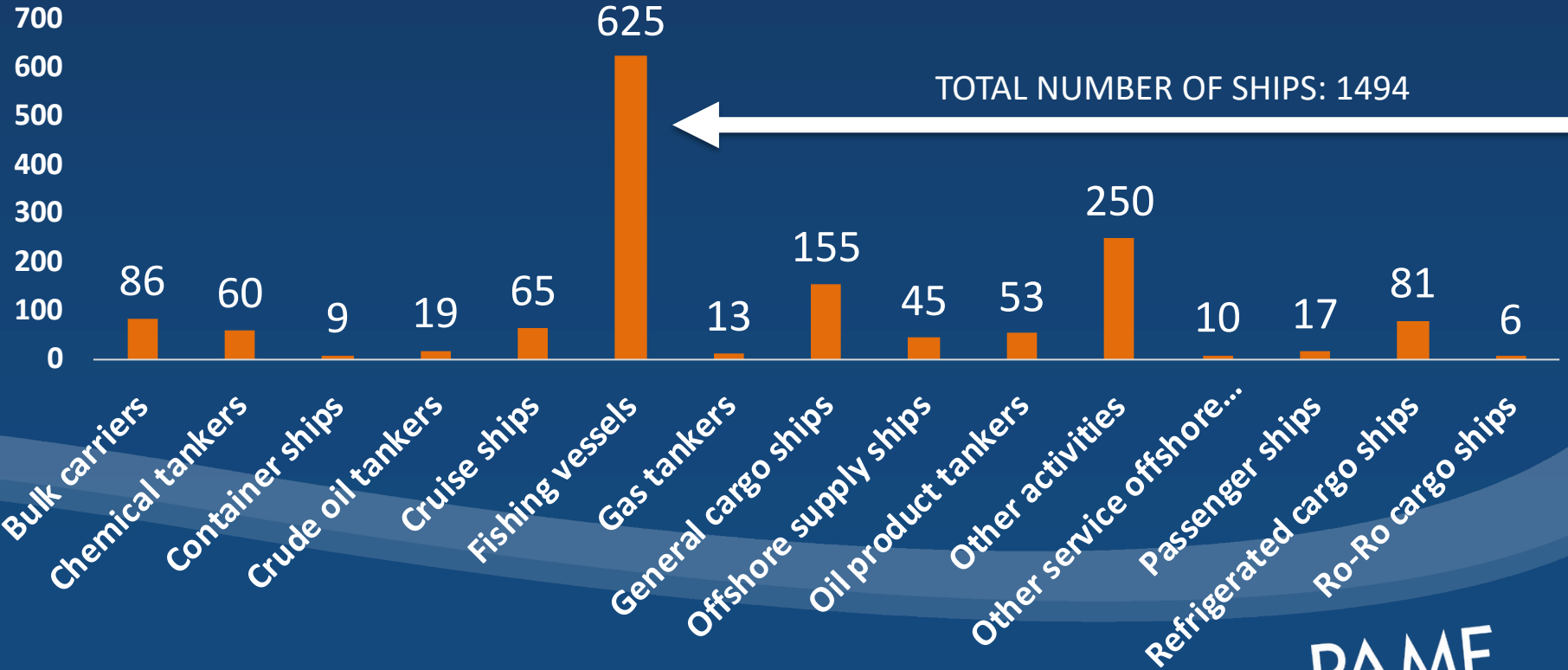
*IMO Arctic
Polar Code Area*

MAIN FISHING AREAS



Ship types in the Arctic Polar Code Area 2018

Number of unique ships



Ship types in the Arctic Polar Code Area 2018

Number of unique ships

FISHING VESSELS

625

ALL OTHER SHIPS

869

Ship types in the Arctic Polar Code Area 2018

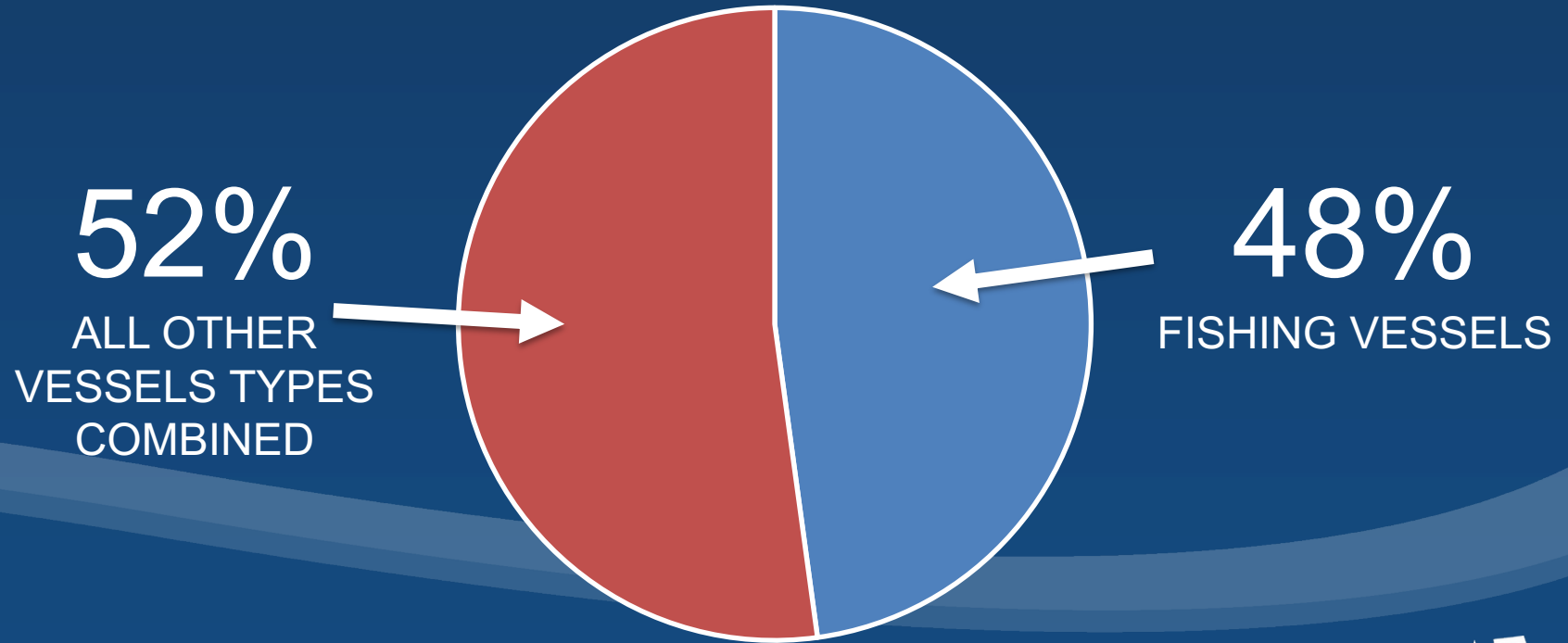
Number of unique ships

FISHING VESSELS

42%

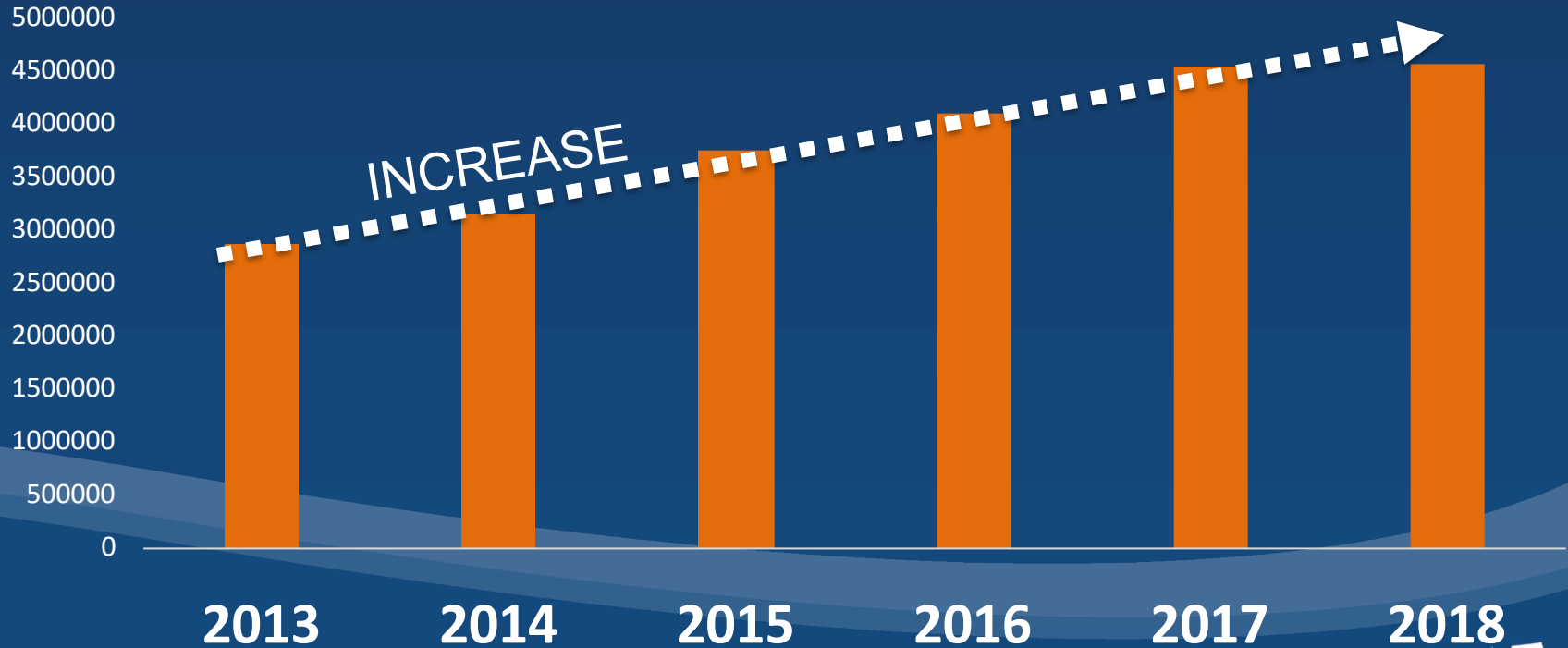
Fishing vessels vs. All other ship types combined

Distance sailed - Arctic Polar Code Area 2018



Fishing vessels – Six year trend (2013-2018)

Distance Sailed in the Arctic Polar Code Area

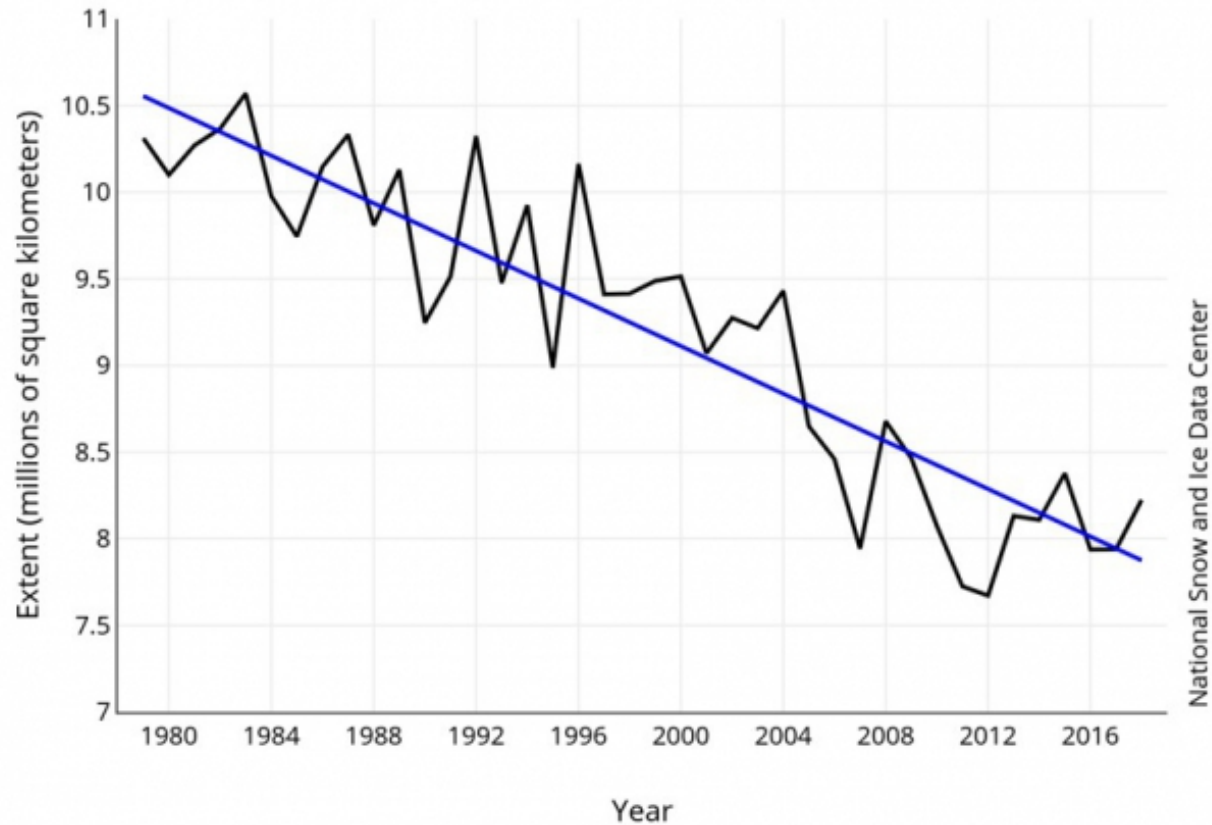


Fishing vessels – Six year trend (2013-2018)

Distance Sailed in the Arctic Polar Code Area

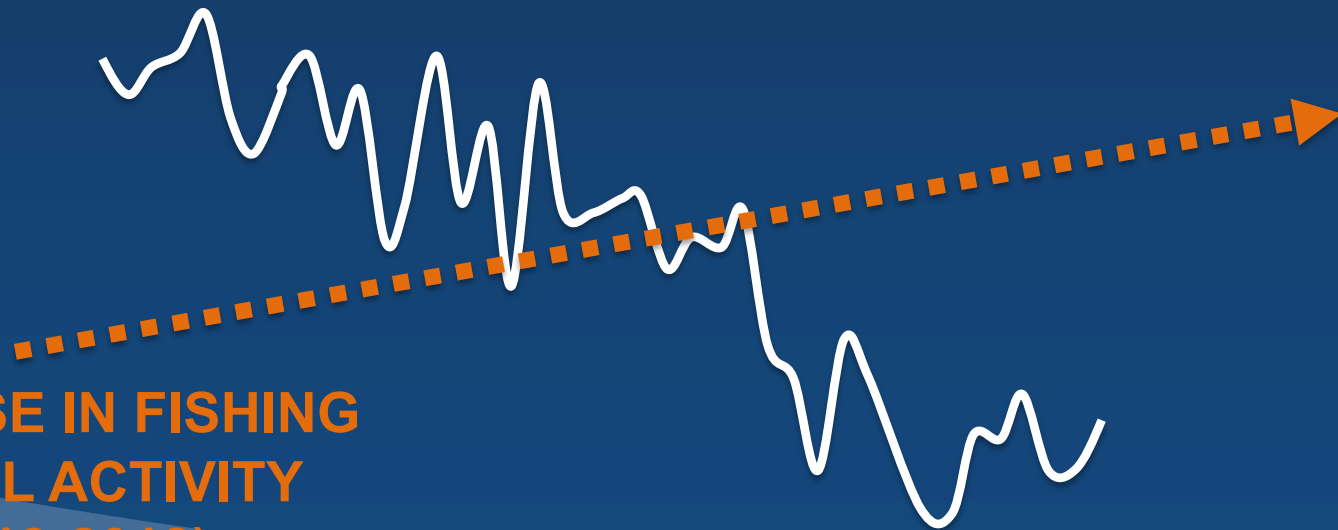


Average Monthly Arctic Sea Ice Extent July 1979 - 2018



National Snow and Ice Data Center

DECREASE IN SEA ICE EXTENT (1979-2018)

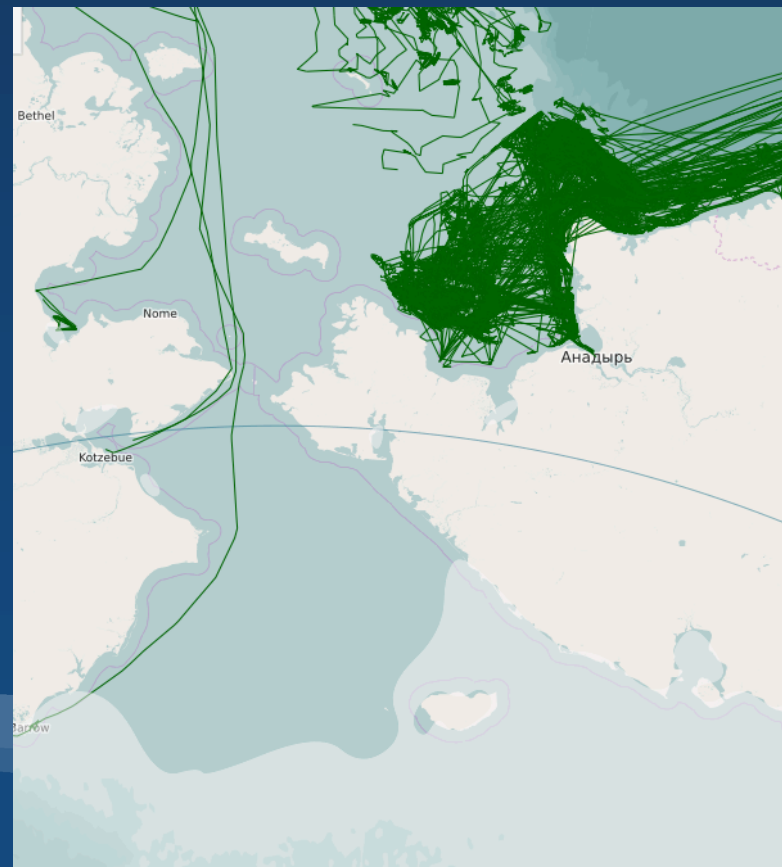


INCREASE IN FISHING
VESSEL ACTIVITY
(2013-2018)

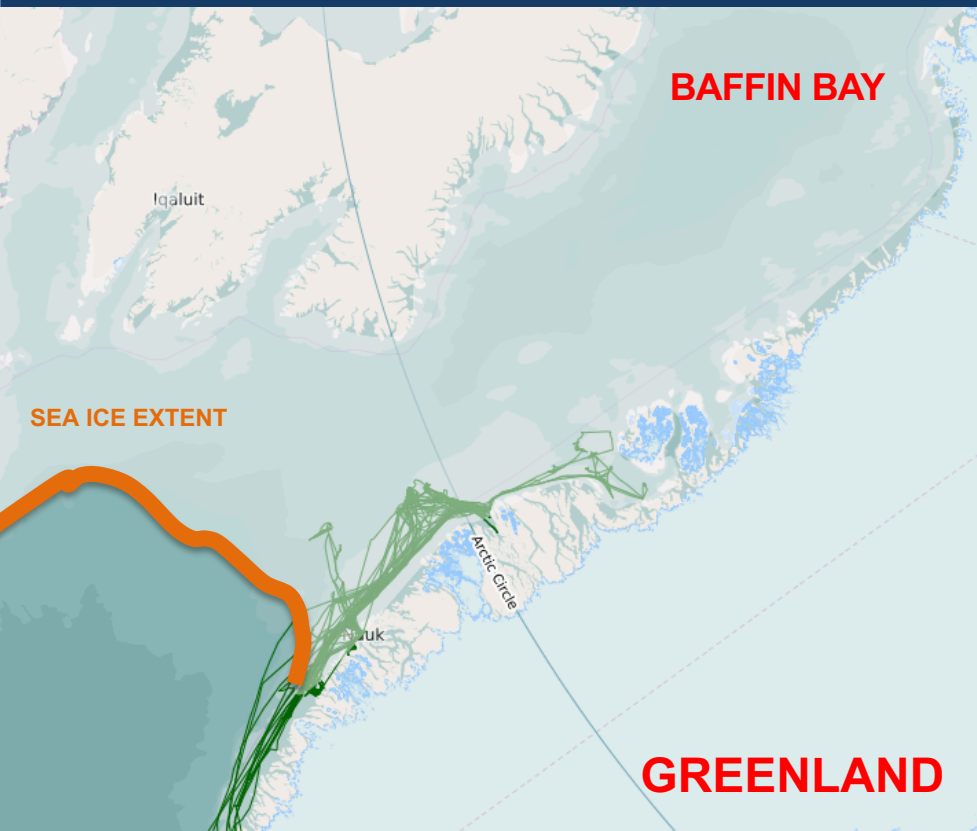
FEBRUARY 2018



JULY 2018



FEBRUARY 2018



JULY 2018



MORE VESSEL
ACTIVITY
=
UPWORD TRENDS
FOLLOW

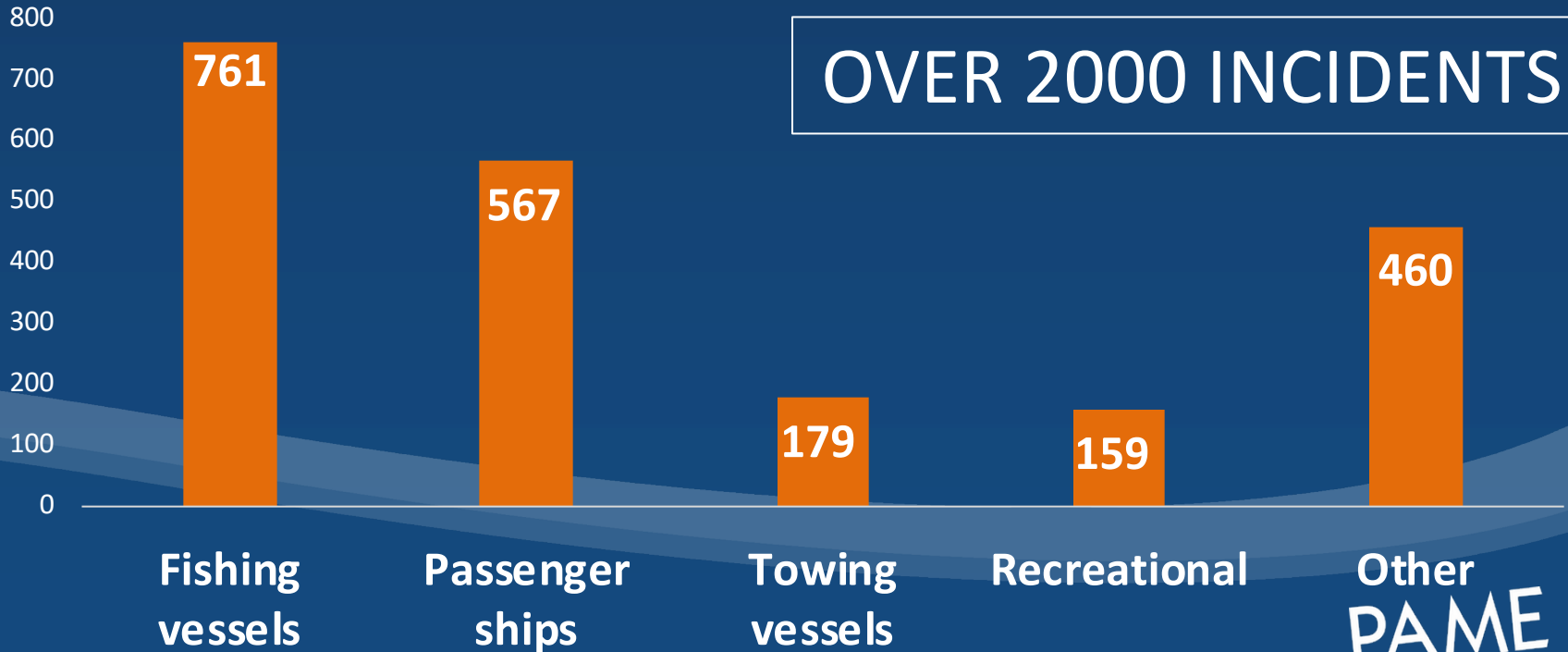
Increase in:

- Fuel consumption
- CO2 and other emissions
- Shipping accidents
- Number of seafarers
- Marine litter

ARCTIC SHIPPING ACCIDENTS

*2005-2017 (Arctic States reported on their own Arctic Area)
Numbers from the CASA Project – a joint project with EPPR*

OVER 2000 INCIDENTS



“Marine litter, including microplastics, in the Arctic derive from human activities on both land and at sea.....most (50-100%) can be attributed to **fishing activity**, such as nets, floats, and other debris.”

PAME: Desktop Study in Marine Litter in the Arctic (2019)

DESKTOP STUDY ON
MARINE LITTER
INCLUDING MICROPLASTICS
IN THE ARCTIC



PAME
Protection of the Arctic Marine Environment



ARCTIC COUNCIL

THANK YOU
www.pame.is
www.asted.is

hjalti@pame.is