

Arctic Council Arctic Marine Shipping Assessment 2009 Report

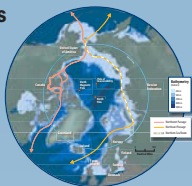


The Arctic Council Ministers approved the Arctic Marine Shipping Assessment (AMSA) Report in April 2009 including its 17 Recommendations as presented under three broad interrelated themes:

- ✦ *Enhancing Arctic Marine Safety*
- ✦ *Protecting Arctic People and the Environment*
- ✦ *Building Arctic Marine Infrastructure*

The AMSA 2009 Report consists of a range of Key Findings and Research Opportunities within the following Sections:

- ✦ *Executive Summary and Recommendations*
- ✦ *Introduction*
- ✦ *Arctic Marine Geography, Climate and Sea Ice*
- ✦ *History of Arctic Marine Transport*
- ✦ *Governance of Arctic Shipping*
- ✦ *Current Marine Use and the AMSA Shipping Database*
- ✦ *Scenarios, Futures and Regional Futures to 2020*
- ✦ *Human Dimensions*
- ✦ *Environmental Considerations and Impacts*
- ✦ *Arctic Marine Infrastructure*



The Arctic marine area.



To order and for further information contact:

PAME International Secretariat
Borgir, Nordurslod
600 Akureyri, Iceland



PAME
Protection of the Arctic Marine Environment



Phone: +354 461-1355
Fax: +354 462-3390
pame@pame.is
www.pame.is