

# A Best Practice to Engage Indigenous People of the Arctic in Arctic Shipping



Prepared by: Nicole Kanayurak, ICC Representative to PAME  
Arctic Shipping Best Practice Information Forum  
5-6 July, 2017

RUSSIA

# INUIT NUNAAT

---

## INUIT HOMELAND

U.S.A.

YUKON-KUSKOKWIM

BERING STRAIT

NORTHWEST ARCTIC

NORTH SLOPE

INUVIALUIT

NUNAVUT

CANADA

KALAALLIT NUNAAT  
GREENLAND

NUNAVIK

NUNATSIAVUT



INUIT

Inuit Circumpolar Council, 2017.  
Prepared by Agita Durkalec. Base map from the Atlas of  
Canada Reference Map Series produced by Natural  
Resources Canada, 2008.

Scale 1 : 9 000 000  
Kilometres 0 90 270 450  
Azimuthal Equidistant Projection

# ICC' s International Engagements

- CAFF
- SDWG
- PAME
- Task Force on Institutional Issues
- Task Force on Oil Spill Response
- Circumpolar Inuit Health
- UNEP (incl. INC)
- UNFCCC
- UNDRIP
- CITIES
- WIPO
- IPS
- EPPR
- AMAP
- CBD
- Commission on Human Rights
- Mercury Expert Group
- POPS Expert Group





# What We Work On



- Food security
- Language
- Human and indigenous peoples' rights
- Environment
- Climate Change
- Contaminants
- Sustainability
- Biodiversity
- Culture and Language
- Resource Development
- Arctic Sovereignty
- Health



# “The Sea Ice is Our Highway”

- A project that discusses the importance of the marine environment to Inuit
- A workshop report on a Circumpolar Inuit Perspective on Arctic Shipping



Photo: Nicole Kanayurak

- Indigenous Created Forums Exist to address a projected increase in marine shipping and risks to food security
  - Arctic Waterways Safety Committee
  - Arctic Marine Mammal Coalition

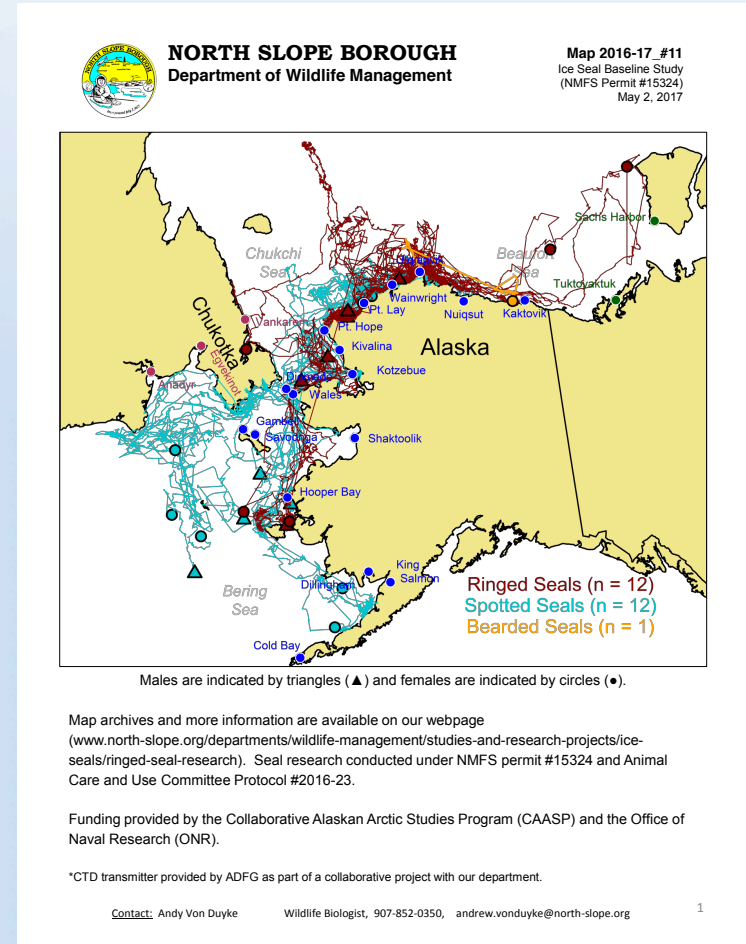




Photo: Nicole Kanayurak

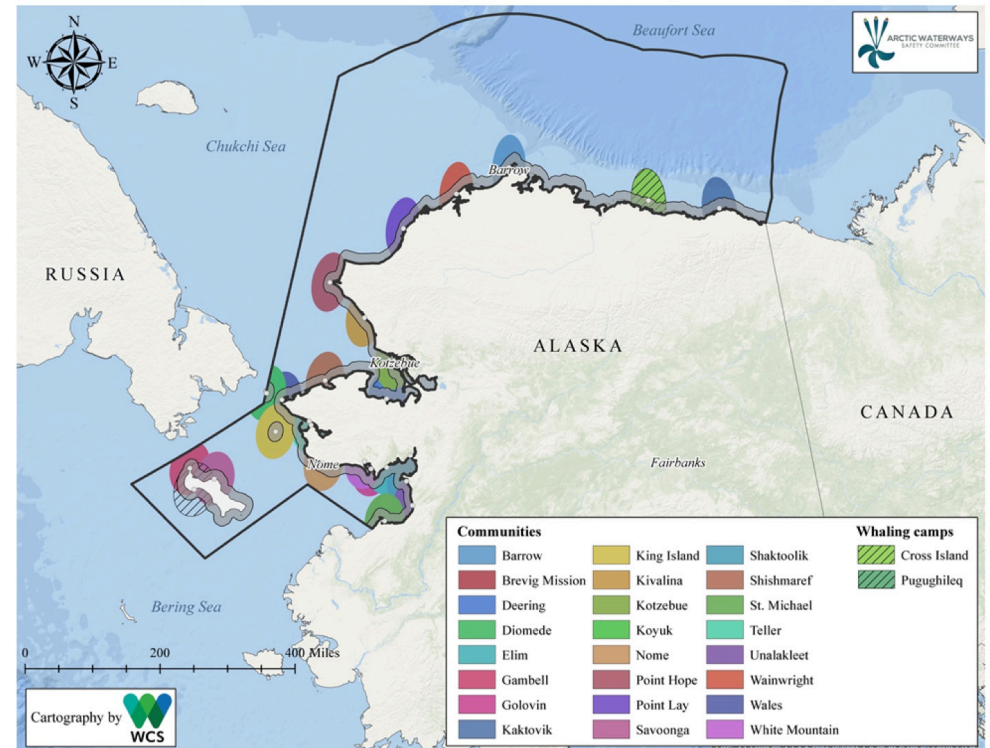


Figure 1. Arctic villages and coastal areas of concern per AWSC SOC for Research Cruise Operations Draft 22 Feb 2017 Version. Although not included in this graphic, Nuiqsut is also recognized as having a 30 nm boundary associated with the Colville River delta and will be added in a future version when the AWSC SOC graphic is updated.





Photo: Nicole Kanayurak