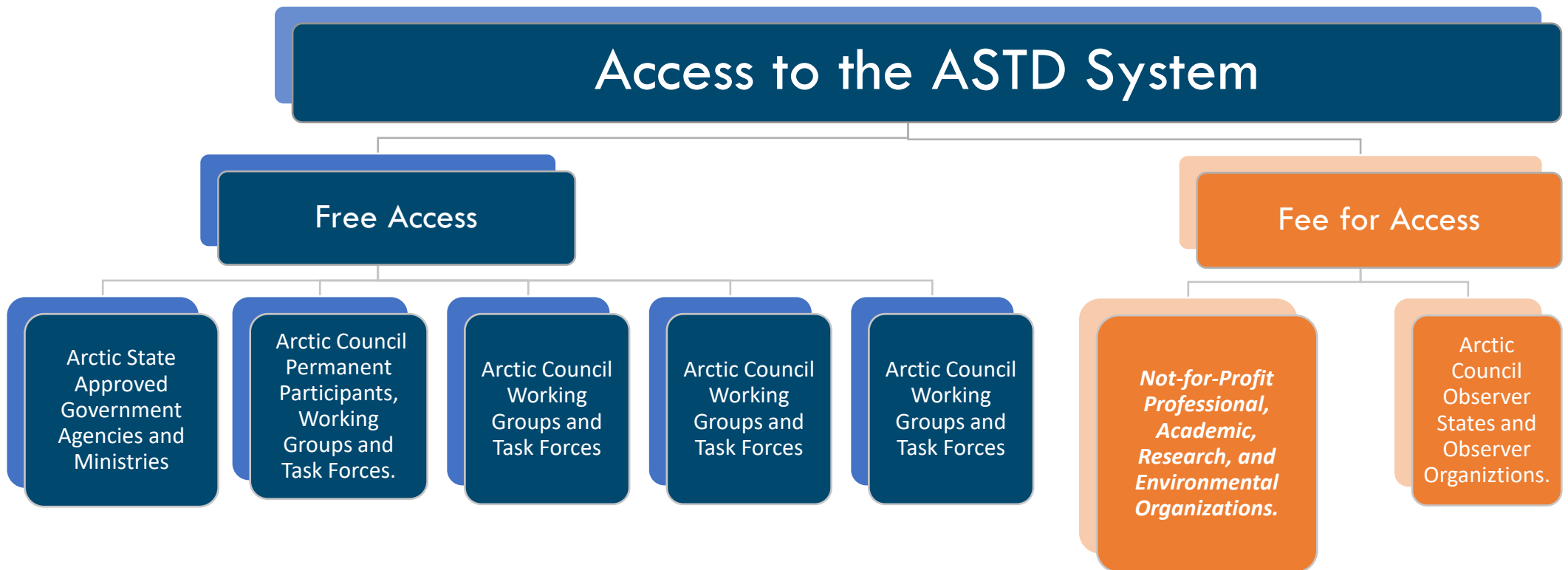




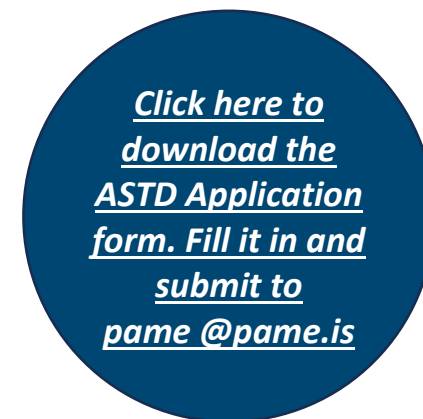
# Access to the Arctic Ship Traffic Data System

The [Cooperative Agreement among the Arctic States Regarding Arctic Ship Traffic Data Sharing](#) (ASTD Framework) establishes who may access the ASTD System, how access is sought, what data may be accessed, whether a fee is charged, and how ASTD data may be used. The ASTD Framework defines three levels of access to the ASTD System. The graphic and table below describe these three access levels. **Through PAME, Participating Arctic States have paid for the development and ongoing maintenance of the ASTD System and have full access to the System, subject to the terms of the ASTD Framework.**



## Three Levels of ASTD Access

The 2017 Arctic Council Framework Agreement for Cooperative Action on Arctic Ship Traffic Data Sharing (ASTD Framework Agreement) establishes who may access the ASTD System, how access is sought, what data may be accessed, whether a fee is charged, and how ASTD data may be used. The ASTD Framework Agreement defines three levels of access to the ASTD System. The table below describes these three access levels. Through PAME, Participating Arctic States have paid for the development and ongoing maintenance of the ASTD System and have full access to the System, subject to the terms of the ASTD Framework Agreement.



### ASTD ACCESS LEVELS

Level I	Level II No Access fee	Level II Access fee	Level III No Access fee	Level III Access fee
<p>Available only to <b>national government agencies and ministries</b> of the Arctic States that have signed the ASTD Framework Agreement (Canada, Kingdom of Denmark, Finland, Iceland, Norway, Sweden, USA). Level I data includes ship identification information such as Maritime Mobile Service Identity (MMSI) numbers, ship names, and detailed ship type identification. Level I data access is provided only when the applicant specifically needs individual ship identification information.</p>	<p>Level II access eligibility requirements are similar to those for Level I. Level II data is the same as that available under Level I except that vessel identity data (Maritime Mobile Service Identity (MMSI), IMO ship identification number, and ship name) are not included and ship type identification is not as detailed.</p>	<p><b>Arctic Council Observers</b> may receive Level II Access upon payment of an access fee. (See "ACCESS FEE" section below.) A list of Arctic Council Observers is available on the <a href="http://www.arctic-council.org">Arctic Council website</a>.</p>	<p>- <b>National government ministries or agencies</b> of Participating Arctic States that are not current on their annual voluntary pro rata share financial contributions. Permanent Participants. Arctic Council subsidiary bodies.</p> <p>- <b>Full-time students</b> at qualifying Academic Organizations may be eligible for Level III access. Please contact the PAME International Secretariat at <a href="mailto:pame@pame.is">pame@pame.is</a> for more information.</p> <p>- <b>Bona Fide Media Organizations.</b> A Bona Fide Media Organization is one that has received or is eligible to receive media accreditation from the United Nations.</p>	<p>- <b>Not-for-Profit Professional, Academic, Research, and Environmental Organizations.</b> (See "ACCESS FEE" section below.) To qualify for Level III access, eligible Organizations must have a demonstrated public interest related to the protection, conservation, and sustainable use of the Arctic. Such interest may be demonstrated by the Organization's publicly available mission statement, charter, articles of incorporation, by-laws, or other similar documents.</p>

## Length of Access and Fees

Where no access fee is applied, access is automatically granted for 12 months.

If an access fee is required, users choose the length of access sought:

- One (1) month – 750 USD
- Three (3) months – 1000 USD
- Six (6) months – 1500 USD
- Twelve (12) months – 2500 USD
- Thirty-Six (36) months – 5000 USD
- Forty -Eight (48) months – 6000 USD

Payment must be received by the PAME Secretariat before access is granted.