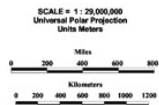
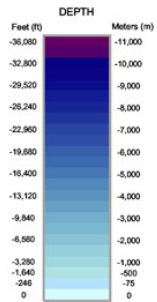


MAP KEY:

LME Numbers:

- 1 East Bering Sea
- 18 West Greenland Shelf
- 19 Iceland Shelf - Sea
- 20 Barents Sea
- 21 Norwegian Sea
- 52 Sea of Okhotsk
- 53 West Bering Sea
- 54 Chukchi Sea
- 55 Beaufort Sea
- 56 East Siberian Sea
- 57 Laptev Sea
- 58 Kara Sea
- 59 East Greenland Shelf - Sea
- 63 Hudson Bay
- 64 Arctic Ocean
- 65 Arctic Archipelago
- 66 Baffin Bay - Davis Strait

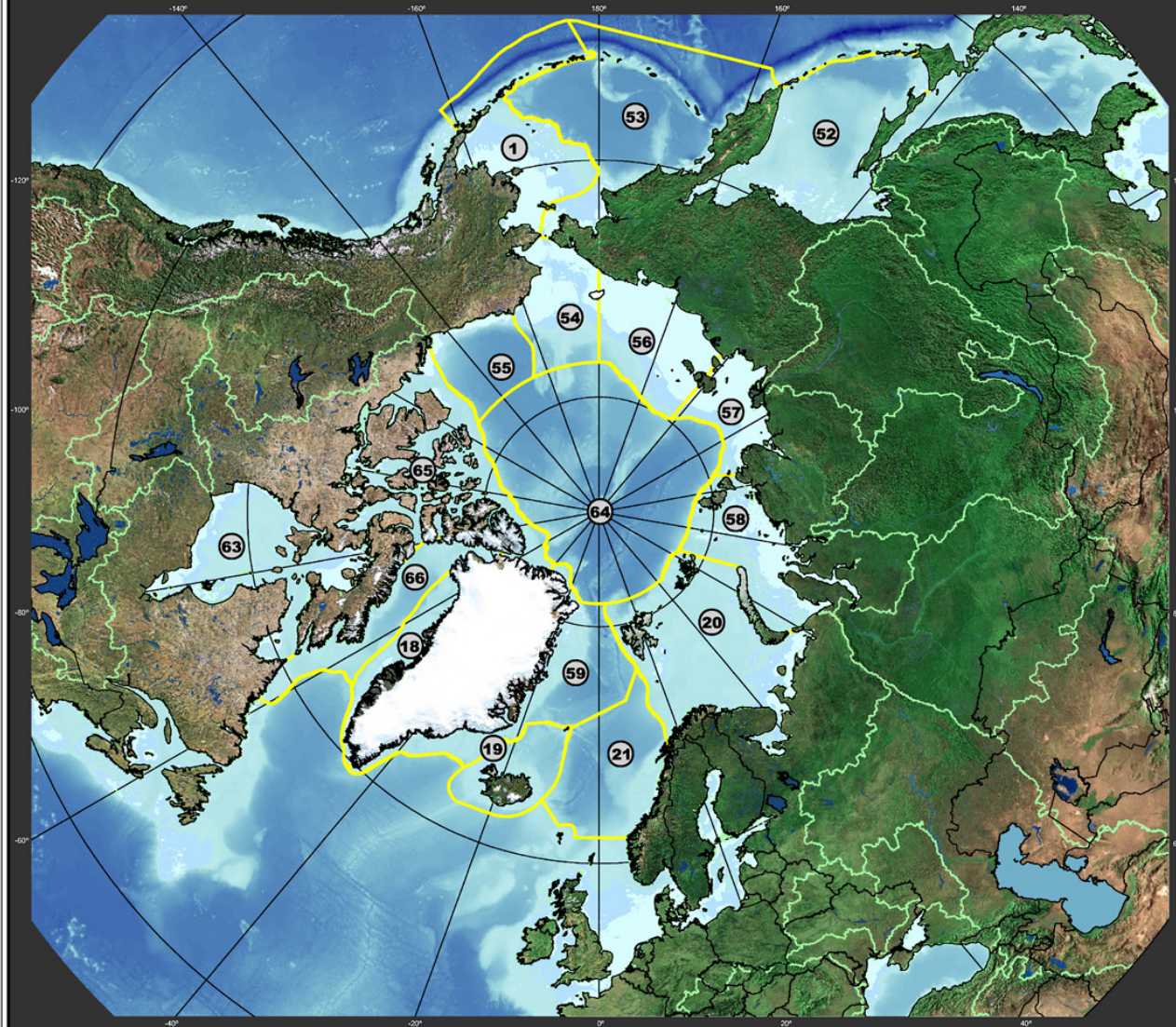
-  Large Marine Ecosystems
-  Watershed Bounds
-  Political Borders



Data Sources:
 Bathymetry (2-minute) : Smith and Sandwell, 1997
 Bathymetry (5-minute) : NAVOCEANO, DEBDBS
 Watersheds (HYDRO 1k) : USGS Eros Data Center
 Terrestrial Image, Political Boundaries : ESRI



Large Marine Ecosystems of the Arctic Region and Linked Watersheds



LARGE MARINE ECOSYSTEMS are areas of the ocean characterized by distinct bathymetry, hydrography, productivity, and trophic interactions. They annually produce 95 percent of the world's fish catch. They are national and regional focal areas of a global effort to reduce the degradation of linked watersheds, marine resources, and coastal environments from pollution, habitat loss, and over-fishing.

For More Information Visit: <http://www.lme.noaa.gov>