

An underwater photograph showing a large school of Atlantic cod swimming in a kelp forest. The fish are silvery with a dark lateral stripe. The kelp is brown and green, with long, narrow leaves. The water is clear and blue.

**Ecosystem Approach Expert Group PAME
Progress Report
PAME II 2015
Tromsø, Norway
September 16, 2015
Hein Rune Skjoldal, Norway and Phil Mundy US
Co-Chairs**

Atlantic cod (*gadus morhua*). Photo: Erlendur Bogason, www.strytan.is

EA Work plan items 2015-2017

1. Ecological objectives
2. Integrated Ecosystem Assessments – IEA
3. Implementation of EA in the Arctic
4. Issues of scale
5. Supporting activities
6. Reporting

WORKSHOP REPORT

PAME, CAFF, AMAP, SDWG
5th Ecosystem Approach to Management Workshop

*Methodology and status of development of ecological
(quality) objectives for Arctic Large Marine Ecosystems*

Annex III – Background document

Introduction

All types of human enterprises such as transport, labor, housing, or environment need to be guided by objectives that give direction to management and communicate to all concerned about what is to be achieved.

Bergen - Norway
26-27th May 2015

1. Contribute to development of ecological objectives

- Scoping white paper for PAME II 2015.
Background paper in Annex in the EA objectives workshop, Bergen, May 2015.
- Further development into a **Status report**, spring 2016 – **Need for guidelines?**
- More input from states and PPs

2. Follow up actions on Integrated Ecosystem Assessments – IEAs

- Third Meeting of Scientific Experts on Fish Stocks in the Central Arctic Ocean April 2015, Seattle, Washington USA
- ICES/AMAP/CAFF/PAME Workshop on Integrated Ecosystem Assessment (IEA) for the Central Arctic Ocean May 2015 Bergen, Norway

Final Report

Third Meeting of Scientific Experts on Fish Stocks in the Central Arctic Ocean

July 2015

Recommending Joint Program of Scientific Research and Monitoring for Central Arctic Ocean

ICES/AMAP/CAFF/PAME Workshop on Integrated Ecosystem Assessment (IEA) for the Central Arctic Ocean

Affili

Recommending ICES Working Group on IEA for Central Arctic Ocean

Chair: Hein Rune Skjoldal

Chair: Phil Mundy

Chair: Alexander Klepikov

Chair: Reidar Hindrum

 Print it  Send to    Share it



LINKS

- [View all members of this group](#)
- [View WKICA Terms of Reference](#)
- [View latest WKICA Report](#)



[GO TO SHAREPOINT SITE](#)

Scoping workshop

- **Geographical scope**

- Central Arctic Ocean basins
- Slopes and relevant parts of shelves
- Inflows from Atlantic and through Bering Strait

- **Thematic scope**

- Basic productivity – primary and secondary production
- Fish stocks – Are there fish? Potential fish production
- Vulnerability - transpolar marine shipping. Ice biota, ringed seal, polar bear, beluga, ivory and Ross's gulls
- Contaminant pathways ?

140°W

160°W

180°

160°E

140°E

60°N

60°N

60°N

60°W

40°W

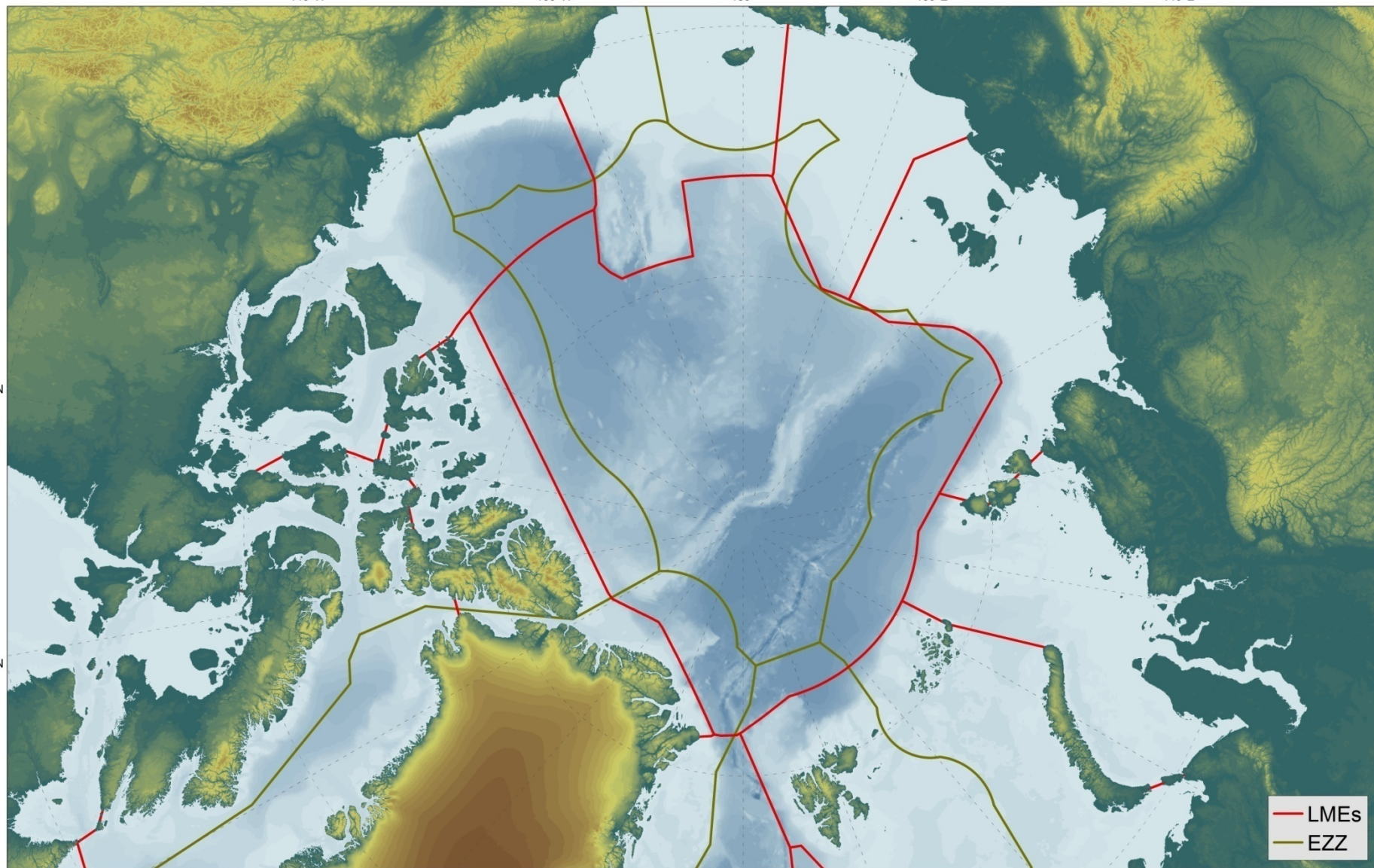
20°W

0°

20°E

40°E

60°E



— LMEs
— EEZ

Implementation of EA in the Arctic

- Workshop (6th EA) or conference – spring/summer 2016
 - o Establish a planning group
 - o Decide on venue and time
 - Report to Ministers “Status of Implementation of the Ecosystem Approach to Management in the Arctic” – 2017
 - Draft prospectus for Conference
- Possible venue and time: Fairbanks, Alaska, August 2016

4. Consider issues of scale in EA

- Scoping document on relation between LME scale and wider pan-arctic scales – autumn 2015
 - Starting point is the ‘road map’ document
 - Prepare a draft outline and establish a writing team
- Scoping document on use of information on ‘EBSA’ s in EA/LME assessment and management context – spring 2016



The End

EA Action Items for PAME-II 2015

- 1. Contribute to development of ecological objectives - 5th EA Workshop***
- 2. Follow up actions on Integrated Ecosystem Assessments - ICES Workshop***
- 3. Implementation of EA in the Arctic 2017***
- 4. Consider issues of scale in EA***