

Conservation of Arctic Flora and Fauna



CAFF



ARCTIC COUNCIL

Common issues



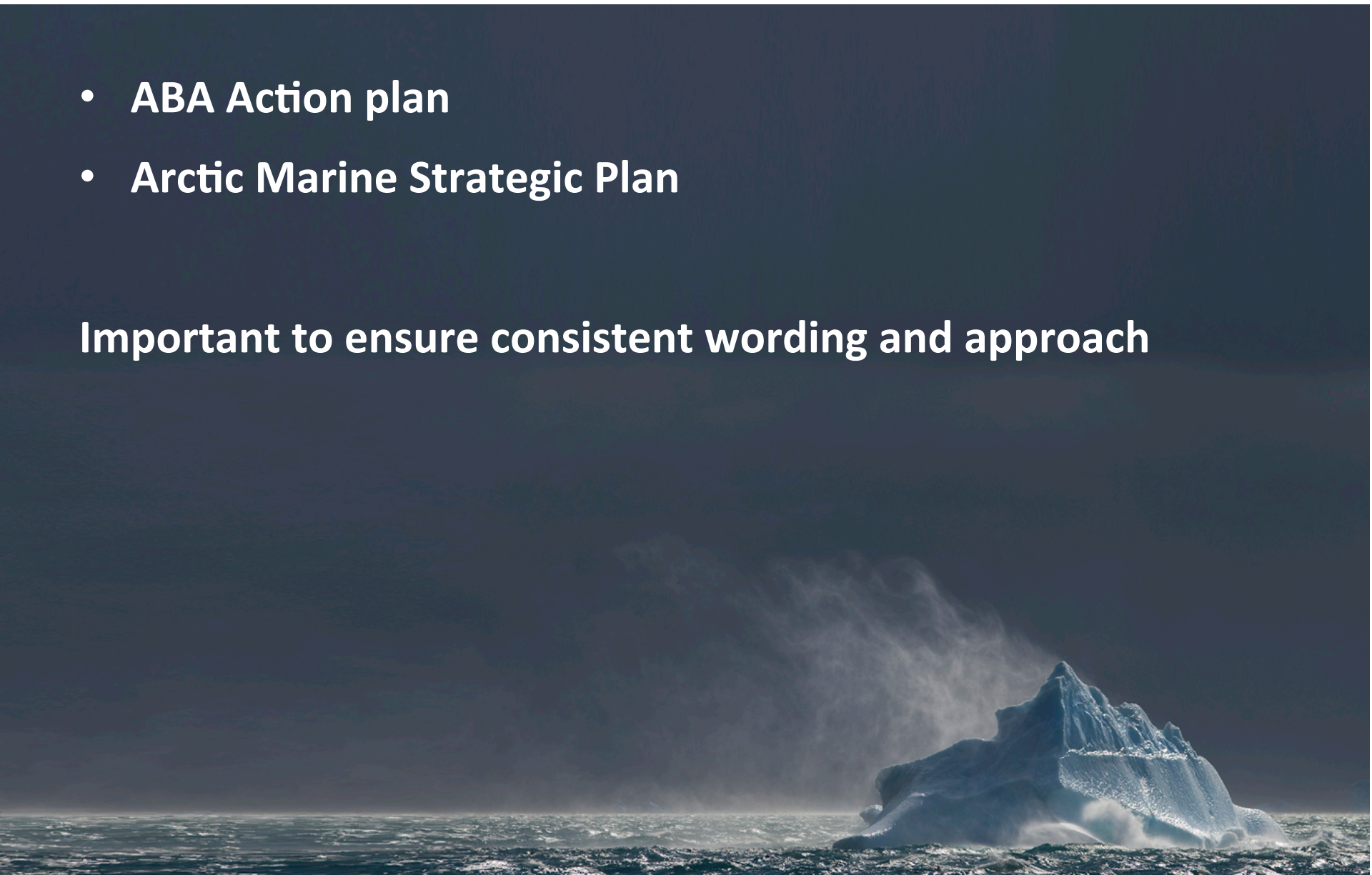
- Ecosystem Based Management
- Mainstreaming
- Important Arctic marine areas
- Invasive species
- Marine protected areas



Framework for cooperation

- **ABA Action plan**
- **Arctic Marine Strategic Plan**

Important to ensure consistent wording and approach



- Action for Arctic Biodiversity
 - Implementing the recommendations of the Arctic Biodiversity Assessment
 - 8 year plan 2013-2021
- For the Arctic Council
- Review
 - Country/PP review
 - Working Group review



Simple Search Advanced Search

Show map

FIND INTERACTIVE MAPS, GIS DATASETS, SATELLITE IMAGERY AND RELATED APPLICATIONS

Aggregated results matching search criteria : 1-1/1 (page 1/1) , 0 selected

Select : [all](#), [none](#)

actions on selection



LOCATIONS OF SUB-ARCTIC AND ARCTIC SHIPPING ACCIDENTS AND INCIDENT CAUSES, 1995-2004

Abstract

Locations of sub-Arctic and Arctic shipping accidents and incident causes, 1995-2004 (source: AMSA 2009). Published in the Arctic Biodiversity Assessment (ABA) released in 2014.

Keywords

ship, accidents, marine, amsa, pame

Schema

iso19139

Extent

-180 33.263444 180 90



- Any -

Search

Reset

Options

Metadata

Data for Download

Interactive Map



ABDS.is --- geo.abds.is/geonetwork

- Boundaries
- Freshwater
- Marine
- Remote sensing
- Terrestrial

Three phases:

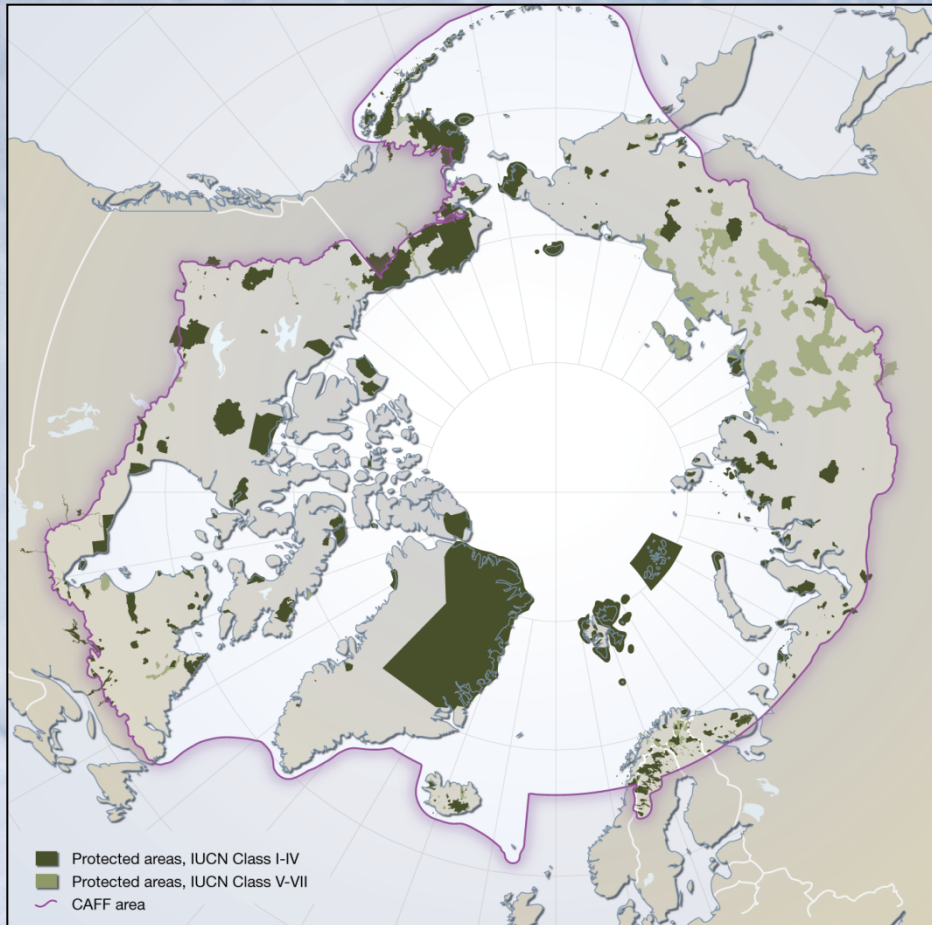
- Phase 1: Integrating and harmonizing existing data (2015)
- Phase 2: Identify gaps & priorities (2016)
- build upon phases 1&2 develop where needed, guidelines or other tools, for safeguarding important marine areas and contribute to relevant int. processes (2017)

Marine Protected Areas

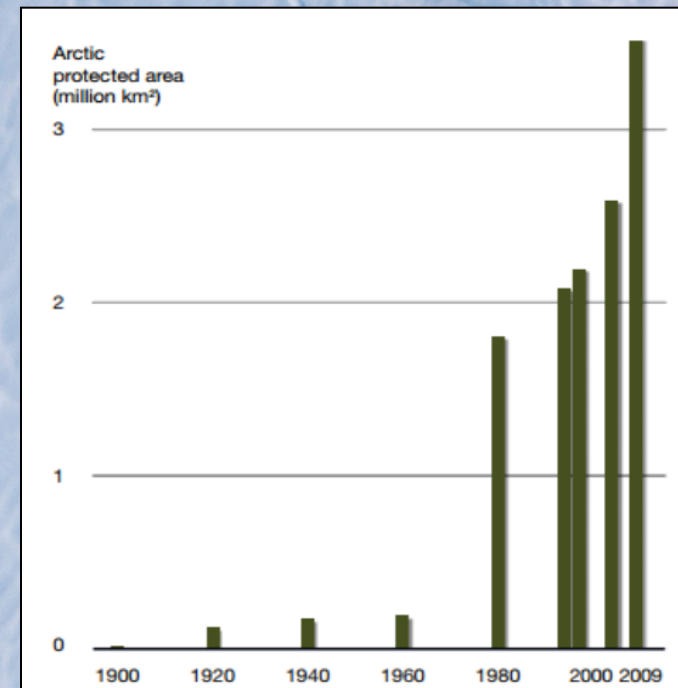


- Integrate & harmonise existing data
- Revise based upon country review
- Incorporate data from relevant processes
- Background paper describing data and process
- Marine protected areas indicator

Protected Areas Index



- 11% protected
- Primarily terrestrial





Thank you

For more information
please visit:

www.caff.is
tom@caff.is

Photos by Carsten Egevang
Unless otherwise stated